



Accessible Southampton Inquiry

Place Directorate – 18/11/21

Place Directorate

- **How the Council contributes to making Southampton's Built Environment accessible to all?**
 - Strategic Planning [Amber Trueman]
 - Development Management [Stephen Harrison]
 - Building Control [Neil Ferris]
 - Highways & Infrastructure [Wade Holmes]

Strategic Planning

- **Current adopted policy** (details in Development Management section)
- **Emerging Southampton City Vision Local Plan - Engagement**
 - Broad questions around 'Issues and Priorities'
 - A review of comments containing "disabled", "disability", "disabilities", "accessible" and/or "accessibility" pulled the following ideas for improvement:
 - More consideration of hidden disabilities generally
 - Improvement to public transport accessibility and connectivity (inc. on-board)
 - Public realm improvements (design and maintenance)
 - More disability-friendly homes (inc. for visitors)
 - Technological options to support those with disabilities
 - Inclusive design for buildings and spaces
 - Better access to waterfront for all

- **Emerging Southampton City Vision Local Plan – Opportunities**

- **Homes** – inclusion of design standards which improve adaptability (e.g. introduction of national space standards = more easily adaptable homes).
- **Design & Public Realm** – additional/alternative design principles (could be more explicit e.g. requirement for ramps).
- **Waterfront** – creating and improving access for all, spaces should be designed to be inclusive and accessible from the outset.
- **Safety and Accessibility** – existing policies will be reviewed to see if any improvements can be made (e.g. clearer reference to accessibility for seen and unseen disabilities).
- **Reference to "accessibility for all"** - weaving reference to accessibility throughout the rest of the plan and the supporting text – raising awareness.

Note: changes to planning policy can only influence future development which requires planning permission.

Development Management

The planning application process & framework:

Equalities Act 2010 S.149 mandatory duty

- (i) eliminate discrimination/harassment/victimisation;
- (ii) advance equality in opportunity;
- (iii) foster good relations.



Equality Act 2010

Planning is a **plan-led system** for new development:

- “...the determination must be made in accordance with the plan unless material considerations indicate otherwise”

s.38.6 Planning and Compulsory Purchase Act 2004

Statutory requirement for **Public Consultation** – response is a 'material consideration'

Target driven process – 8/13 week targets for decisions

Saved Local Plan Review (LPR) – 2015

SDP 11 Accessibility and Movement

Planning permission will only be granted for development which:

- *contributes to an attractive network of public routes and spaces for pedestrians, cyclists and vehicles;*
- *secures adequate access for all pedestrians including people with mobility and sensory difficulties such as elderly people, disabled people, the very young and those using prams and wheelchairs.*

Supported by **Residential Design Guide** (2006) - inc. Adaptability

Design & Access Statements set out the applicant's case

- all Major development (10dwellings/1,000sq.m) and
- new dwellings in Conservation Areas

Plenty of evidence that this in itself doesn't deliver inclusive development

Residential Design Guide



Building Control

Building Regulations – Part M v1 (Dwellings)

- Guidance setting minimum standards for dwellings.
- Higher standards can be applied subject to:
 - Planning conditions
 - Local Plan Policy – opportunity for improvement
- Approved Document M Volume 1 is currently being reviewed by MHCLG and is likely to be updated in 2022
 - Opportunity for Change?

Building Control

Building Regulations -Part M Vol 2 – Non-Dwellings

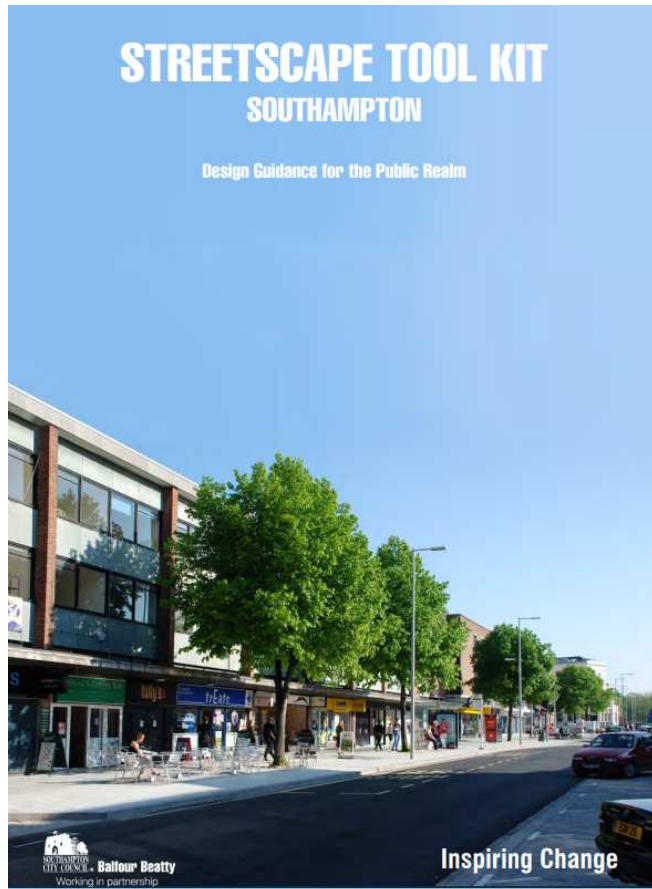
- Appropriate standards are recommended for access into buildings, circulation around and specific features such vertical lifts, loop induction systems, sanitary accommodation, stadia seating, hotel bedroom design, Changing Places etc.

Approval Process

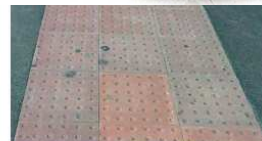
- Building Regulation applications are checked against Part M standards at plan approval stage and via site inspection at completion stage prior to occupation.

Can be strengthened by local plan policy – an opportunity

Highways & Infrastructure



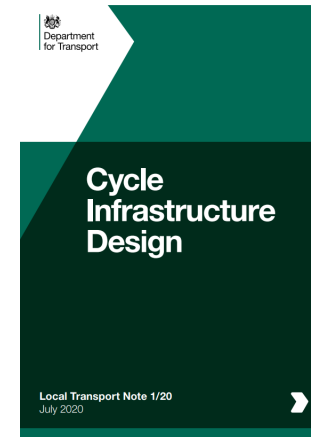
Guidance on the use of Tactile Paving Surfaces



Colour/Finish
Red with Blister finish
Drawing Number
SD/1/1111
Note
Laid in accordance with DfT 'Guidance on the use of Tactile Paving Surfaces'



Product Name
Blister Paving - Buff
Location to be used
Citywide
Material
Concrete
Colour/Finish
Buff with Blister finish
Drawing Number
SD/1/1111
Note
Laid in accordance with DfT 'Guidance on the use of Tactile Paving Surfaces'



<https://www.gov.uk/government/collections/local-transport-notes>

Collection

Local transport notes

Traffic management guidance for local authorities.

From: [Department for Transport](#)
Published 13 September 2012
Last updated 27 July 2020 — [See all updates](#)


Local transport notes (LTNs) summarise the latest and most important ideas about traffic management issues and provide guidance for local authorities.

Documents

[Cycle infrastructure design \(LTN 1/20\)](#)
27 July 2020 Guidance

Highway Design is based around Streetscape Tool Kit, and relevant DfT guidelines

Highways & Infrastructure



Road Safety Audit Stage 2

Adanac Park to Hospital Park & Ride:
Coxford Rd/Lords Hill Way/Lordswood Rd junction

on behalf of Balfour Beatty Living Places

August 2021

Document reference: 14/111

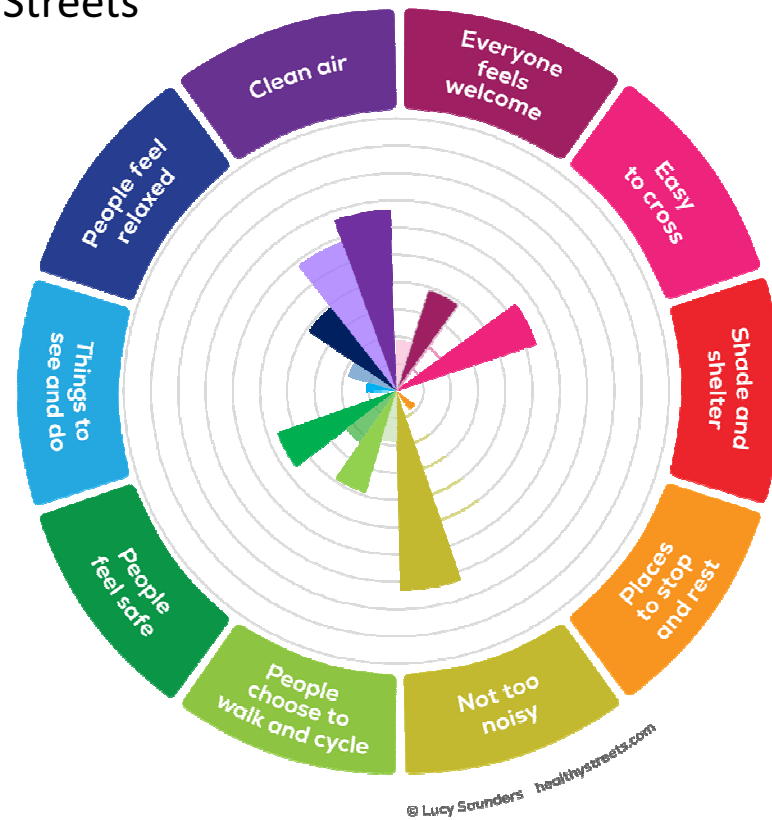
Client reference: 20ATM016A

Road User Audit Team
Hampshire County Council
Three Minsters House
78 High Street
Winchester SO23 8UD
roaduseraudit@hants.gov.uk
<http://www.hants.gov.uk/sharedexpertise>

Independent Road Safety Audit carried out on scheme designs and a post scheme evaluation

Other assessment tools used such as:

- *LTN1/20 Cycle design guide Cycle Level of Service
- *Walking Route Audit Tool
- *Healthy Streets



Highways & Infrastructure



Equality and Safety Impact Assessment

The public sector Equality Duty (Section 149 of the Equality Act) requires public bodies to have due regard to the need to eliminate discrimination, advance equality of opportunity, and foster good relations between different people carrying out their activities.

The Equality Duty supports good decision making – it encourages public bodies to be more efficient and effective by understanding how different people will be affected by their activities, so that their policies and services are appropriate and accessible to all and meet different people's needs. The Council's Equality and Safety Impact Assessment (ESIA) includes an assessment of the community safety impact assessment to comply with section 17 of the Crime and Disorder Act and will enable the council to better understand the potential impact of the budget proposals and consider mitigating action.

Name or Brief Description of Proposal	Frogmore Lane / Brownhill Way / Lower Brownhill Road Junction Improvements With the arrival of the 'Transforming Cities Fund' (TCF), SCC have commissioned a series of sustainable transport schemes to be designed by BBLP. Developing Park & Ride sites is one of the strategic aims of Connected Southampton 2040 (LTP4) along with the need to support the growth of key employment areas in the city such as Adams Park and Southampton General Hospital through connections to Park & Ride sites. As such the Transforming Cities Fund includes funding for the delivery of highway works to support the Southampton West Park & Ride site. The aim of this assessment is to assess the impact the project will have on protected characteristic groups and the safety of the general public. If any negative impacts are identified, mitigations will be proposed to minimise them as far as reasonably practicable.
Brief Service Profile (including number of customers)	Strategic Transport is responsible for the policy and strategy relating to all transport activities in the City. It is also responsible for strategic direction of the maintenance and management of the highway network including maintenance and enforcement of the Strategic Cycle Network and any related functions. Customers include all transport users in the city including residents, visitors and businesses.
Summary of Impact and Issues	<ul style="list-style-type: none"> • Potential for proposed junctions to increase congestion. • Potential for conflict between cyclists and pedestrians.
Potential Positive Impacts	<ul style="list-style-type: none"> • Upgrading Traffic Signals for improved traffic flow. • Increasing NMU off-carriageway space. • Increasing & improving NMU crossing facilities. • Promoting sustainable travel. • Improving aesthetics & recreational areas.

Equality and Safety Impact Assessment (ESIA)

All schemes have a ESIA carried out on them by the Designer (BBLP) and Client (SCC) *(internal review of how scheme impacts on community groups)*

Impacts and Mitigation Actions

Disability is one such user group

Taxi/Private Hire Representatives

Southampton Hackney Association (SHA)

Southampton Taxi Consultative Council

Door 2 Door Cars

Southampton Hackney Association (SHA)?

Sustainable Transport Representatives

Southampton Cycle Campaign

Southampton CTC

Disability Representatives

Geoff Wilkinson (Formerly of SPECTRUM Access Group)

SPECTRUM Access Group

David Livermore

David Livermore

Other Organisations

University Hospital Southampton NHS Foundation Trust

Network Rail

Hampshire Chamber of Commerce

All schemes have a Traffic Regulation Order Advertised with a dedicated consultation list Where they can input into Order



SOUTHAMPTON
CITY COUNCIL

Highways & Infrastructure

£1.5m Footway Budget until the end of 22/23
(an increase on previous years, normally £500k p.a)

30 Additional locations identified for improvement



Patch Repairs



Rocking Slabs



Complete
Reconstruction



Slurry Overlay

Locations for intervention are from a variety of sources including Highway Safety Inspections, Pothole Reporting website, Member requests, Combining with adjacent schemes

Summary

- Southampton City Vision Local Plan opportunity to embed best practice in planning policy
 - Standards
 - Engagement processes - Disability/Accessibility Forum?
- Challenge of potential changes to planning system

Questions

Headings in Calibri (Heading Bold pt 36)

Sub headings in Calibri (Heading pt 32)